



SafeTrack Smart Alarm Package

Lock it for NOW...Load it FOREVER

Introduction

Compact, powerful, and secure, the SafeTrack Smart Alarm Package provides advanced tracking and security features with seamless integration into the ProtechDNA system.

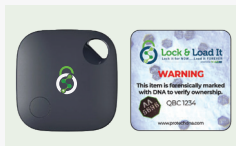
Product Overview

Quick Start Summary

- 01. Set Up the Smart Alarm Lock** (see Page 3).
- 02. Set Up the Smart Tag on Apple Find My** (see Page 4).
- 03. Apply DNA Adhesive to Mark Items** (see Page 5).
- 04. Register Your Product at ProtechDNA.com** (see Page 6).

Included in Your Package

- 01. Smart Alarm Lock**
 - Tamper alarm, Bluetooth-enabled, and controlled via the ProtechDNA App.
- 02. Smart Tag**
 - Compatible with Apple Find My for easy tracking.
- 03. DNA Adhesive Tube**
 - Suspended with forensic microdots that permanently mark ownership.
- 04. DNA Labels**
 - Visible theft deterrent with forensic microdot technology.
- 05. Instruction Manual**



Setting Up the Smart Alarm Lock

Download the **ProtechDNA Mobile App**

- To set up and control your Smart Alarm Lock, download the **ProtechDNA Mobile App** from the **App Store** (iOS) or **Google Play** (Android).



Install **Batteries**

- Use the included **special screwdriver** to remove the rear cover of the lock.
- Install **3 AAA batteries** (not included) as indicated.
- **Important** : Ensure the alarm is turned off before removing the rear cover. Tampering with the screws while the alarm is active will trigger the alarm.

Pairing with the **ProtechDNA Mobile App**

- Open the **ProtechDNA App** on your smartphone.
- From the **Dashboard**, tap the **Menu Icon** (upper-left corner).
- Select **My Locks** from the menu.
- Tap the **+ Icon** (upper-right corner) to add a new lock.
- The app will begin searching for your lock. Ensure the lock is powered on and close to your phone.



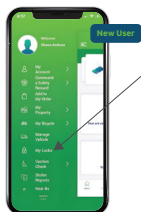
- ✓ Activating and Deactivating the Alarm
- ✓ Use the center button with the lock icon to toggle the alarm
 - When the lock is secured, pressing this button will activate the alarm.
 - Press the button again to deactivate the alarm.

Power On the **Lock**

- Press the **Power Button** once. The blue LED light will flash, indicating the lock is powered on and ready for pairing.
- **Factory Password** : The default password is **123456**. You will be prompted to change this during setup. Save your new password securely as it is required for unlocking and resetting the lock.

Important Notes

- Always ensure the alarm is deactivated before opening the rear cover to replace batteries.
- Keep the included screwdriver in a secure location, as it is necessary to access the battery compartment.
- Tampering with the rear cover or screws while the alarm is active will trigger an alarm.

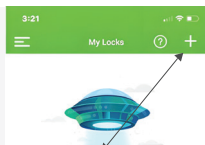


Pairing with the ProtechDNA Mobile App

- Open the **ProtechDNA App** on your smartphone.
- From the **Dashboard**, tap the **Menu Icon** (upper-left corner).
- Select **My Locks** from the menu.

Unlocking the Lock

- Open the ProtechDNA App and navigate to My Locks.
- Select your lock and tap the Unlock Button.
- The blue LED light will flash, and the lock bar will release.
- Pull out the lock bar to open the device. The app will display a status of Disconnected.



- Tap the **+** Icon (upper-right corner) to add a new lock.
- The app will begin searching for your lock. Ensure the lock is powered on and close to your phone.
- **Factory Password :** The default password is **123456**. You will be prompted to change this during setup. **Save your new password securely** as it is required for unlocking and resetting the lock.

Alarm Sensitivity and Settings

- Access the Settings Page within the app to customize the lock's features:
 - Adjust alarm sensitivity levels.
 - Set up auto-lock timer options.
 - Monitor battery status.

Unlocking the Lock

- Place the lock bar into the cylinder and press the **Lock Button** in the app.
- The app will display a **Connected** status once the lock is secured.

Setting Up the Smart Tag



Function Button

- **Power On**

Press the Function Button once to power on the device.

- **Power Off**

Press and hold the Function Button for **5 seconds** to turn off the device.

- **Reset Mode**

Press the Function Button **4 times quickly within 3 seconds**, then press and hold

*The button **5 times** until you hear a beep to reset the device.*

Pairing with Apple Find My

- Ensure **Bluetooth** is on and open the Find My app on your iPhone or iPad.
- Hold the Smart Tag near your device to connect.
- Complete the setup and confirm your item appears in the Find My map.

Setting Up the Smart Tag Pairing with Apple Find My

- Open Find My
- Add Item > Other Supported Item
- Hold near device to connect
- Name the item and complete setup

Registration Process

How to Register

- Go to **ProtechDNA.com /Register.**
- Log in or create a free account.

MY ACCOUNT

- Manage Profile
- Dashboard
- My Profile
- My PIN Numbers
- My Smart Tags**
- Manage Room
- My Tracker
- My Orders
- Change Password
- Refer A Friend

1

Register your smart tags and assign them to your property to track them.

SMART TAG SERIAL NUMBER	NICK NAME	ACTION
678900TYU890	Test 2	
TV957890TYM	Test 1	

2

PROPERTY NAME	Location	PIN	SMART TAG	ACTION
Toolbox	Garage	XV770098		
Backpack	My house	XV770098		

3

- Select My Smart Tag – to add your smart tag to your account
- Smart Tag Inventory – List of your smart tags in your account
- Manage Property – In the manage property section shows your smart tag attached to specific property.

Importance of Registration

- Registered items are identifiable by over 10,000 law enforcement agencies nationwide, making recovery easier if lost or stolen.



Scan to register

Using the DNA Labels

Placement Tips

- Place DNA labels in visible locations on your items to serve as a deterrent and mark ownership.
- Ensure the surface is clean and dry for secure application.

Applying the Labels

- Peel off the backing and press the label firmly onto your item.
- Apply labels on multiple items for maximum coverage.

Make sure you register your DNA labels in your ProtechDNA account, so the PIN is linked to you as the owner.



Why Use DNA Labels?

- Labels act as both a visible theft deterrent and a forensic link, proving ownership in case of recovery.



These Forensic stickers have tiny microscopic dots embedded in the adhesive so if they are removed the dots will remain on the item for law enforcement to authenticate ownership

Applying the DNA Adhesive

Two Types of DNA Adhesive Applications

01. DNA Adhesive Packet

- **Preparation :** Before use, massage the packet to ensure all microdots are evenly distributed and not stuck to the sides or bottom, and shake the tube.



Adhesive packet



Adhesive tube

02. DNA Adhesive Tube

- This version is resealable and allows for multiple uses over time. Follow the same preparation and application instructions as above. Includes approx. 100-125 applications.

Additional Tips

- For long-term durability, apply the adhesive only to hard surfaces.
- If you encounter any issues or have questions, contact us at info@protechdna.com

Important Details

- Adhesive packet contains over 3,500 microdots and is suitable for 50-75 applications.
- Once opened, the adhesive should be used entirely. Exposure to air will cause it to dry out over time. With the tube, you can reseal by using cap.
- If you need to reuse the packet later, ensure it is sealed tightly and minimize air exposure.



Application

- Ensure the property surface is clean and at room temperature.
- Use the applicator to apply the adhesive directly onto the surface.
- Allow the adhesive to dry to touch for 30 minutes. For complete curing, wait 24 hours.
- For best results, apply to hard surfaces. On soft surfaces, the adhesive may be rubbed off or removed.



Customer Support

For assistance, contact us at :

☎ 888-800-1503

✉ info@protechdna.com

🌐 www.protechdna.com

